

gy, crpxln, hd-sbbiky.

**CALCAREOUS SILTSTONE:**  
 m lt gy, v arg, v f glauc spk,  
 occ v f qtz grn, tr lith, tr  
 foram, grd-Calc Clyst , calc  
 spks, v sft- hd, sbbiky-blky

**CALCAREOUS CLAYSTONE:**  
 m dk gy, sft-frm, slty,  
 sbbiky-blky

**CALCILUTITE:** yelsh gy, v lt  
 gy, crpxln, foram, hd-sbbiky

**CALCAREOUS SILTSTONE:**  
 m lt gy, v arg, v f glauc spk,  
 occ v f qtz grn, tr lith, tr  
 foram, grd-Calc Clyst, calc  
 spks, v sft- hd, sbbiky-blky

**CALCILUTITE:** yelsh gy, v lt  
 gy, crpxln, foram, hd-sbbiky

**CALCAREOUS CLAYSTONE:**  
 m-lt gy, spkled w kaolinitic  
 cly, tr v f glauc, calc spks,  
 sft-frm, slty, sbbiky-blky

**CALCAREOUS SILTSTONE:**  
 m lt gy, v arg, v f glauc spk,  
 occ v f qtz grn, tr lith, tr  
 foram, grd-Calc Clyst, calc  
 spks, v sft- hd, sbbiky-blky

**CALCAREOUS CLAYSTONE:**  
 m-lt gy, spkled w kaolinitic  
 cly, tr v f glauc, calc spks,  
 sft-frm, slty, sbbiky-blky

**CALCAREOUS SILTSTONE:**  
 m gy, v arg, v f glauc spk,  
 occ v f qtz grn, tr lith, tr  
 foram, grd-Calc Clyst, calc  
 spks, v sft- hd, sbbiky-blky

**CALCAREOUS CLAYSTONE:**  
 m gy, tr glauc spks, frm,  
 sbbiky

**CALCAREOUS SILTSTONE:**  
 m gy-m dk gy, grd-Calc Clyst,  
 occ foss frag, com glauc  
 spks, frm-tr hd, sbbiky

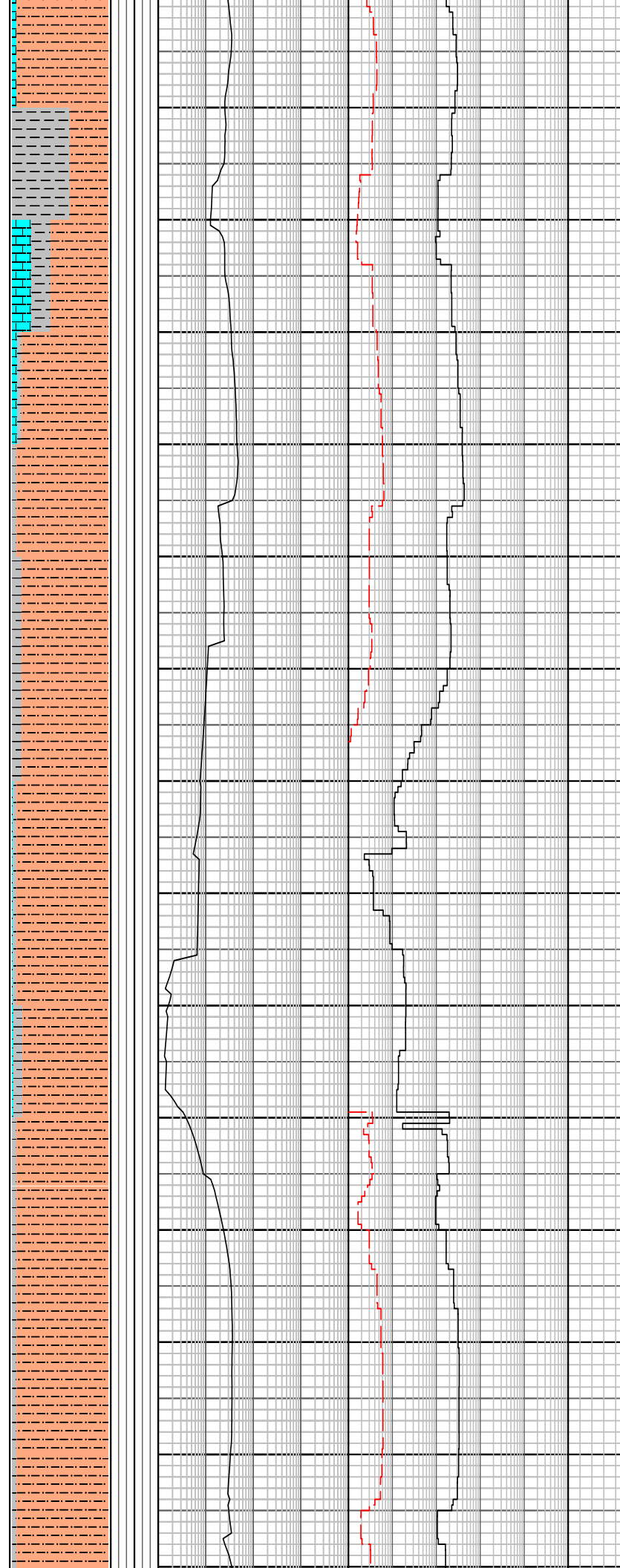
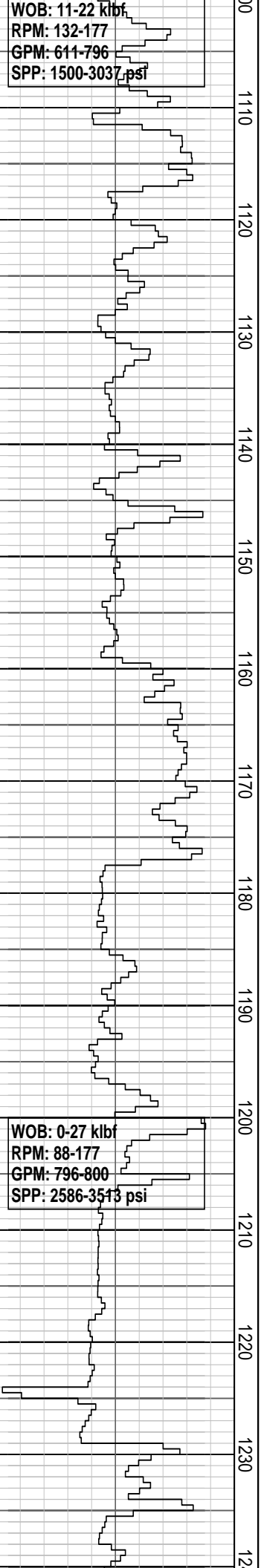
**CALCILUTITE:** lt gy, tr brn m  
 gy, com foss frag, mod arg,  
 crpxln, hd, sbbiky

**CALCAREOUS CLAYSTONE:**  
 m gy, tr glauc spks, frm,  
 sbbiky

**CALCILUTITE:** lt gy, tr brnsh  
 m gry, com foss frags, mod  
 arg, crpxln, hd , sbbiky.

WOB: 11-22 klbf  
RPM: 132-177  
GPM: 611-796  
SPP: 1500-3037 psi

WOB: 0-27 klbf  
RPM: 88-177  
GPM: 796-800  
SPP: 2586-3513 psi



**CALCAREOUS SILTSTONE:**lt gy - m dk gy, wh kaolinitic cly i/p, v argl, v f glauc, occ v f Qtz, frm - mod hd i/p, sbbly - blkly.

**CALCAREOUS SILTSTONE:**lt gy - m dk gy, wh kaolinitic cly i/p, v arg, v f glauc, occ v f Qtz, frm to mod hd i/p, sbbly - blkly.

**CALCILUTITE:**lt gy, com foss frags, mod argl, crpxln, hd, sbbly.

**CALCAREOUS CLAYSTONE:**lt gy - m lt gy, slty, foss frags, sft - mod hd, sbbly.

**CALCAREOUS CLAYSTONE:**m lt gy, lt brnsh gy, v arg, com glauc spks, sft - frm, sbbly.

**CALCAREOUS CLAYSTONE:**m lt gy - m dk gy, slty, com foss frags, sft to mod hd, sbbly.

**CALCAREOUS SILTSTONE:**m gy, v arg, com glauc spks, tr blk carb spks, tr v f Qtz, sft - frm, sbbly.

**CALCAREOUS CLAYSTONE:**m dk gy, slty, frm - mod hd, sbbly.

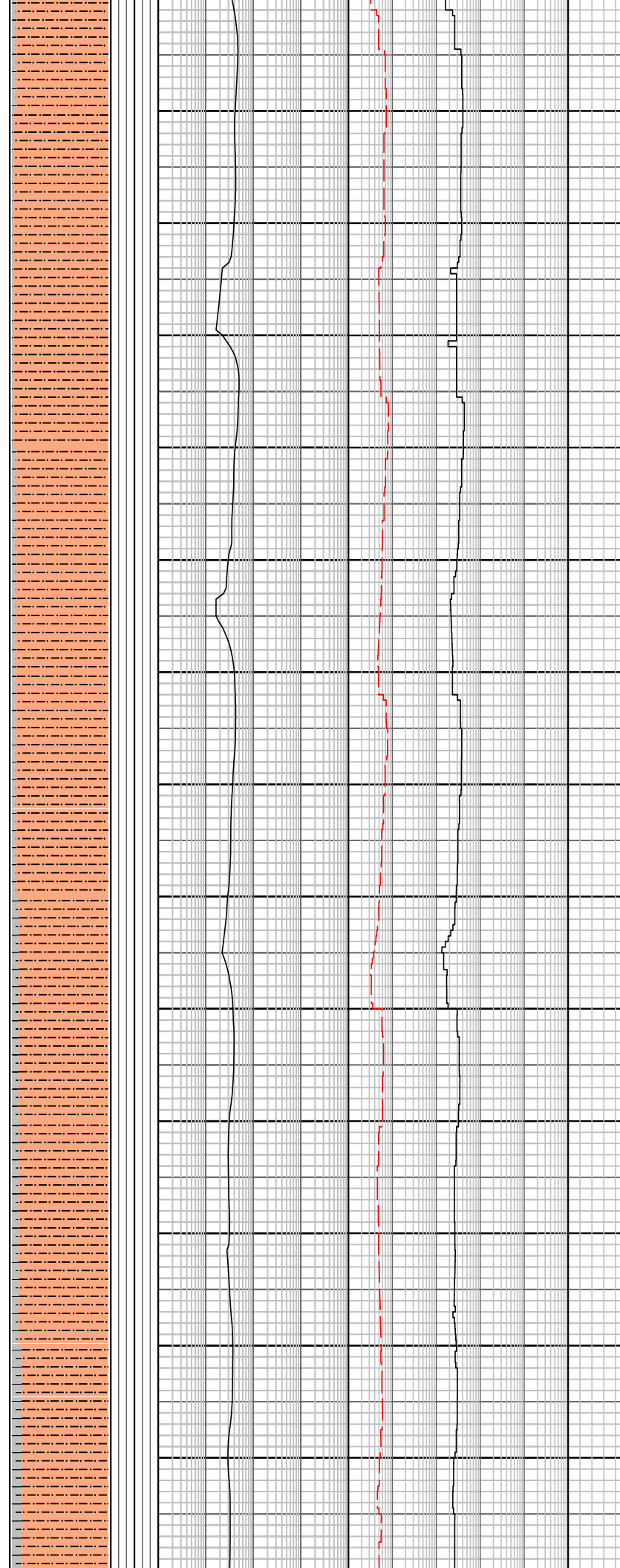
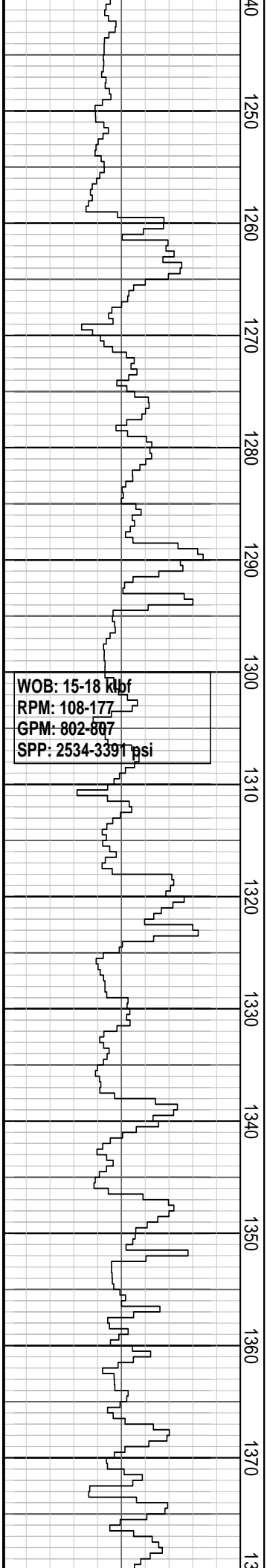
**CALCISILTITE:**lt yelsh gy, wh, hd, fri i/p, sbang.

**CALCAREOUS SILTSTONE:**m lt gy - m dk gy, lt brnsh gy, v arg, com glauc spks, tr foram, sdy i/p grd to Slty Sst, frm - mod hd, sbbly - blkly.

**CALCAREOUS SILTSTONE :**m gy - m dk gy, occ lt brnsh gy, arg, com glau, com v f to f Qtz, frm to tr mod hd, sbang - sbbly.

**CALCAREOUS CLAYSTONE:**m dk gy, slty, frm - mod hd, sbbly.

**CALCAREOUS SILTSTONE:**lt brnsh olv gy, m lt gy i/p, argl, com glau, com v f to f Qtz, loc grd to Slty Sst, frm to mod hd, sbbly.



**CALCAREOUS CLAYSTONE:**  
 m dk gy, slty, frm - mod hd, sbblky.

**CALCAREOUS SILTSTONE:**  
 m gy - m dk gy, occ lt brnsh gy, arg, com glauc, com v f - f Qtz, frm - tr mod hd, sbang - sbblky

**CALCAREOUS SILTSTONE:**  
 lt brnsh olv gy, m lt gy i/p, arg, com glau, com v f to f Qtz, loc grd to Slty Sst, frm to mod hd, sbblky.

**CALCAREOUS CLAYSTONE:**  
 m dk gy, slty, tr glau spks, frm - mod hd, sbblky.

**CALCAREOUS SILTSTONE:**  
 lt brnsh olv gy, m lt gy i/p, argl, com glau, com v f to f Qtz, loc grd to Slty Sst, frm - mod hd, sbblky.

**CALCAREOUS SILTSTONE:**  
 lt olv gy - gnsh gy, m lt gy i/p, argl, com glau, com v f to f Qtz, loc grd to Slty Sst, frm - mod hd, sbblky.

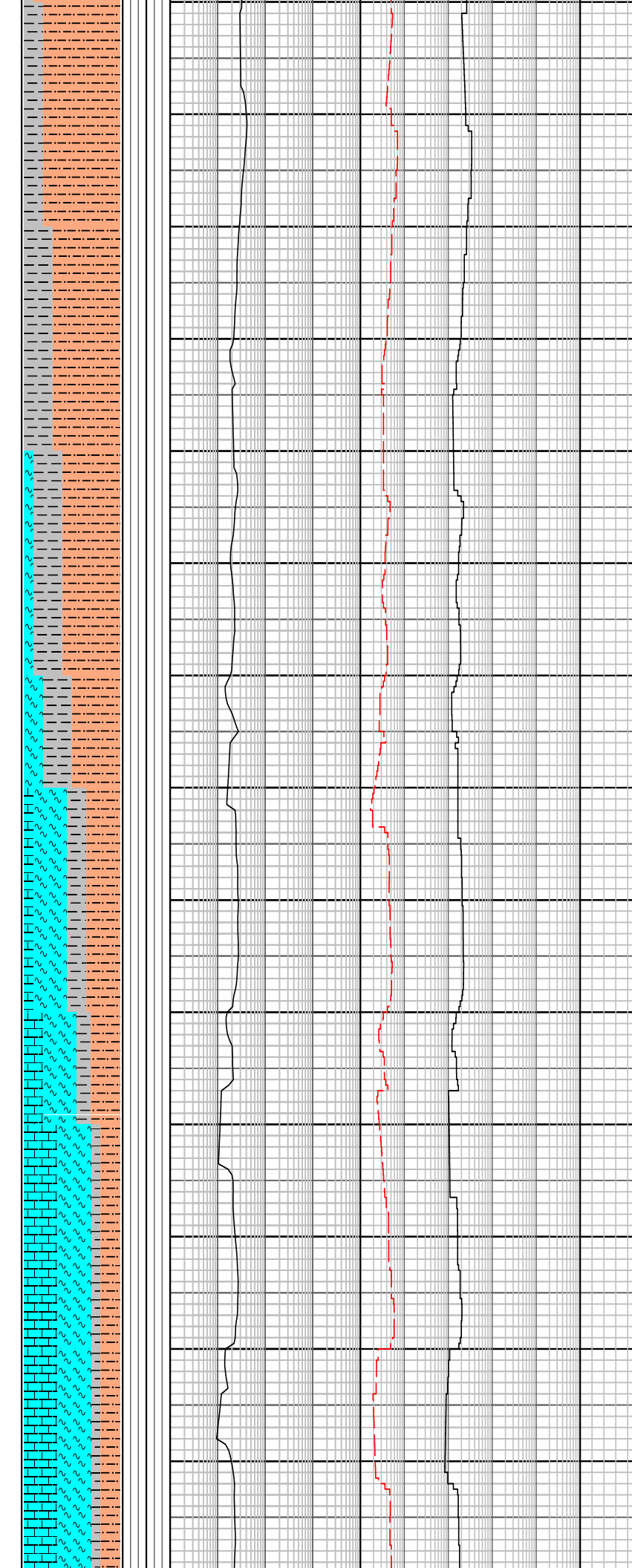
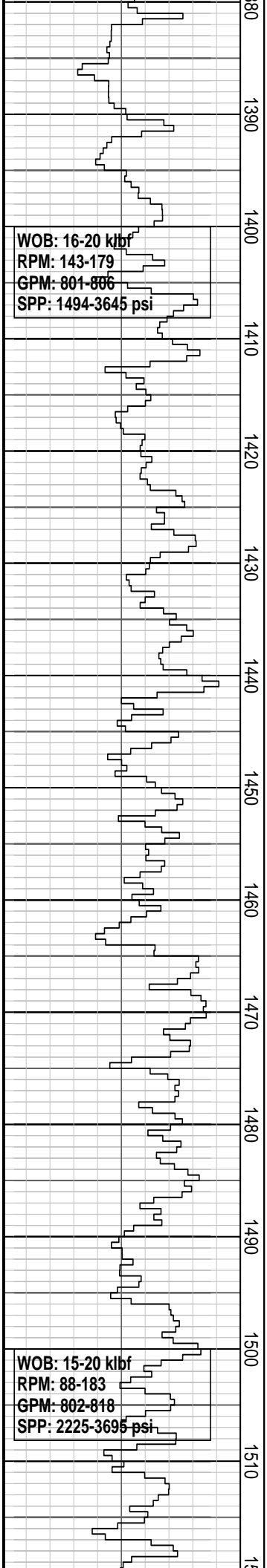
**CALCAREOUS CLAYSTONE:**  
 m dk gy, slty, tr glau spks, frm - mod hd, sbblky.

**CALCAREOUS SILTSTONE:**  
 lt olv gy - gnsh gy, m lt gy i/p, argl, com glau, com v f to f Qtz, loc grd to Slty Sst, frm - mod hd, sbblky.

**CALCAREOUS CLAYSTONE:**  
 m dk gy, slty, tr glau spks, frm - mod hd, sbblky.

**CALCAREOUS SILTSTONE:**  
 lt olv gy - gnsh gy, m lt gy i/p, argl, com glau, com v f to f Qtz, loc grd to Slty Sst, frm - mod hd, sbblky.

**CALCAREOUS SILTSTONE:**  
 lt olv gy - gnsh gy, m lt gy i/p, argl, com glau, com v f to f Qtz, loc grd to Slty Sst, frm - mod hd, sbblky.



**CALCAREOUS CLAYSTONE:**  
 m dk gy, slty, tr glau spks, frm - mod hd, sbblky.

**CALCAREOUS SILTSTONE:**  
 lt olv gy - gnsh gy, m lt gy i/p, argl, com glau, com v f to f Qtz, loc grd to Slty Sst, frm - mod hd, sbblky.

**CALCAREOUS SILTSTONE:**  
 lt olv gy - gnsh gy, m lt gy i/p, argl, com glau, com v f to f Qtz, loc grd to Slty Sst, frm - mod hd, sbblky.

**CALCAREOUS CLAYSTONE:**  
 gnsh gy - m lt gy, wh i/p, slty i/p, tr glau spks, sft amor - frm.

**CALCAREOUS MARL:** wh, tr blk carb streaks, tr loc w/ m grn rndd glau pel, tr loc w/ v f sbrndd sd & r grd to Clcar i/p, sft - mod hd.

**CALCAREOUS SILTSTONE:**  
 lt olv gy - gnsh gy, m lt gy i/p, argl, com glau, com v f to f Qtz, loc grd to Slty Sst, frm - mod hd, sbblky.

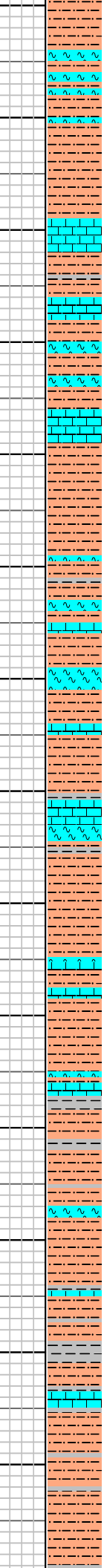
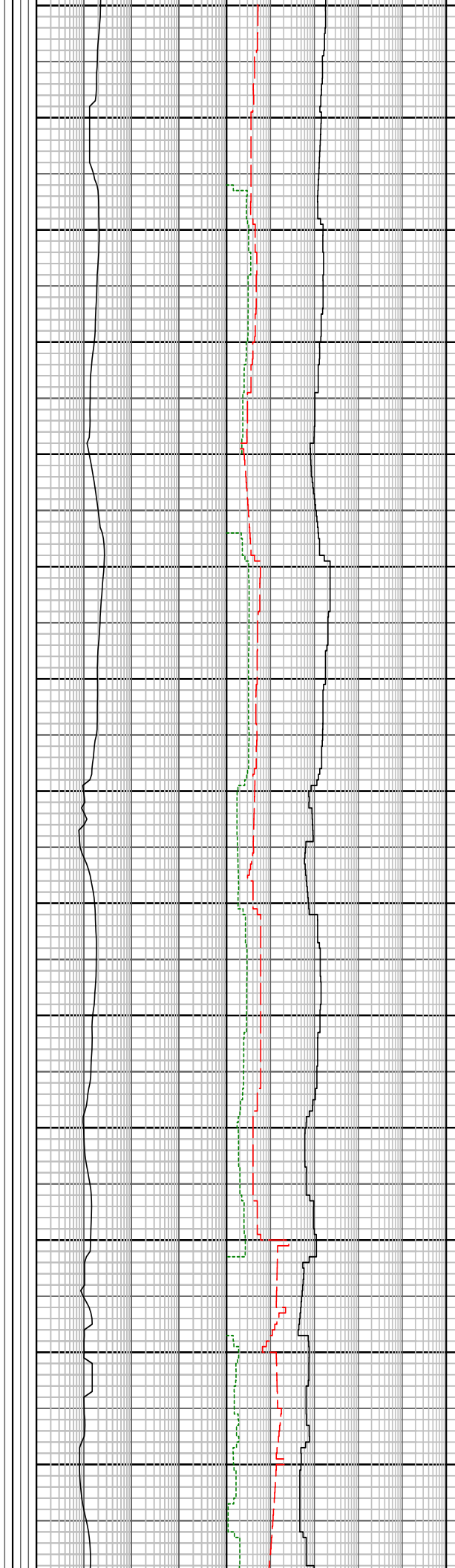
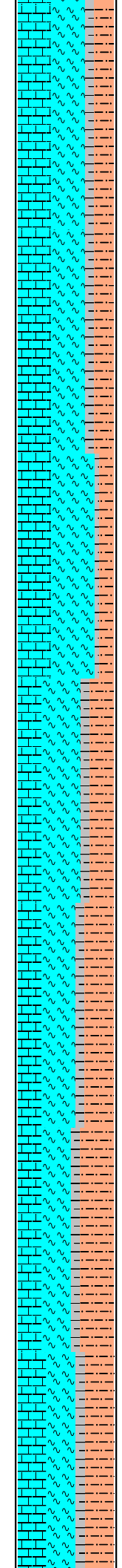
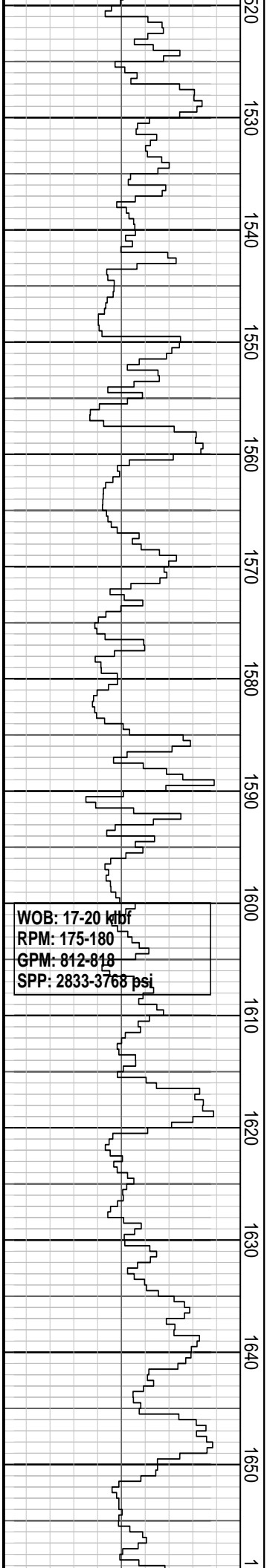
**CALCAREOUS MARL:** wh, tr blk carb streaks, tr loc w/ m grn rndd glau pel, tr loc w/ v f sbrndd sd & r grd to Clcar i/p, sft - mod hd.

**CALCAREOUS CALCARENITE:** wh - yelsh gy i/p, com blk spks, tr loc w/ m grn rndd glau pels, mod hd - hd.

**CALCAREOUS MARL:** wh, tr blk carb streaks, tr loc w/ m grn rndd glau pel, tr loc w/ v f sbrndd sd & r grd to Clcar i/p, sft - mod hd.

**CALCAREOUS SILTSTONE:**  
 lt olv gy - gnsh gy, m lt gy i/p, argl, com glau, com v f to f Qtz, loc grd to Slty Sst, frm - mod hd, sbblky.

**CALCAREOUS MARL:** wh, tr blk carb streaks, tr loc w/ m



grn rndd glau pel, tr loc w/ v f  
sbrndd sd & r grd to Cclar  
i/p, sft - mod hd.

**CALCAREOUS**  
CALCARENITE: wh - yelsh gy  
i/p, com to abd blk spks, tr  
loc w/ v f m grn rndd glau  
pels, tr w/ v f sd, mod hd - hd.

**CALCAREOUS MARL:** wh,  
com loc w/ abd blk carb  
strks, tr loc m grn rndd glau  
pels, tr loc w/ v f sbrndd sd &  
sft - mod hd.

**CALCAREOUS SILTSTONE:**  
olv gy, r sdy Sltst i/p, r  
forams, mod hd - hd, sbbiky -  
fiss, 1% blk, v calc, hd, sbfiss  
shale.

**CALCAREOUS CLAYSTONE:**  
m gy, hom to slty i/p, sft  
amor to frm i/p.

**CALCAREOUS MARL:** wh,  
com loc w/ abd blk carb  
strks, tr loc m grn rndd glau  
pels, tr loc w/ v f sbrndd sd &  
sft - mod hd.

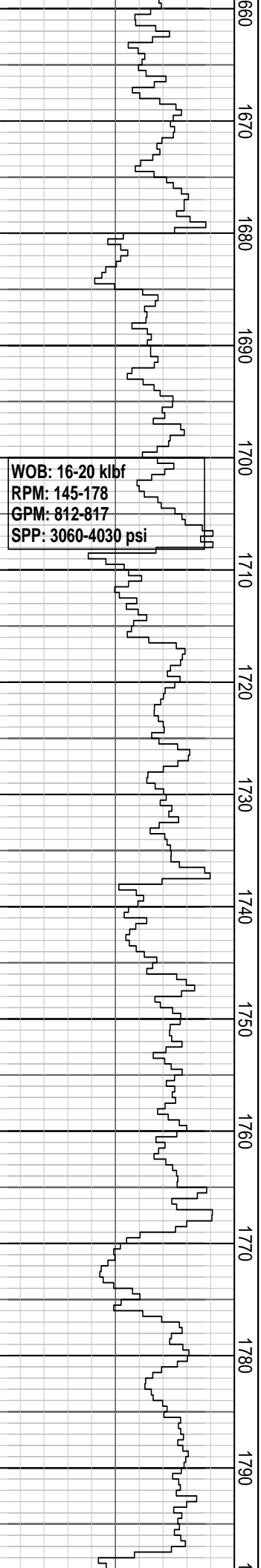
**CALCAREOUS SILTSTONE:**  
olv gy, r sdy Sltst i/p, r  
forams, mod hd - hd, sbbiky -  
fiss, 1% blk, v calc, hd, sbfiss  
shale.

**CALCAREOUS**  
CALCARENITE: wh - yelsh gy  
i/p, com to abd blk spks, tr  
loc w/ v f m grn rndd glau  
pels, tr w/ v f sd, mod hd - hd.

**CALCAREOUS CLAYSTONE:**  
m gy, hom to slty i/p, sft  
amor to frm i/p.

**CALCAREOUS MARL:** wh,  
com loc w/ abd blk carb  
strks, tr loc m grn rndd glau  
pels, tr loc w/ v f sbrndd sd &  
sft - mod hd.

WOB: 17-20 kbf  
RPM: 175-180  
GPM: 812-818  
SPP: 2833-3768 psi



WOB: 16-20 klbf  
 RPM: 145-178  
 GPM: 812-817  
 SPP: 3060-4030 psi

Carbide Gas Peak

**CALCAREOUS CALCARENITE:** wh - yelsh gy i/p, com to abd blk spks, tr loc w/ v f m grn rndd glau pels, tr w/ v f sd, mod hd - hd.

**Carbide Run @ 1677.0mMDRT**  
 Theo: 4503 Stk  
 Actual: 4583 Stk  
 Hole Washout = 2%

**CALCAREOUS SILTSTONE:** olv gy, r sdy Siltst i/p, r forams, mod hd - hd, sbbly - fiss, 1% blk, v calc, hd, sbfiss shale.

**CALCAREOUS CLAYSTONE:** m gy, hom to slty i/p, sft amor to frm i/p.

**CALCAREOUS SILTSTONE:** gnsh gy-mgy, tr lseforam and tub calc vnembd, r trnsp, sbang qtz, mod hd-hd, sbbly-sbfis, r SHALE, brnsh blk-blk, tr fis and brit

**CALCAREOUS CLAYSTONE:** olv gy-lt gy, m lt - m dk gy, occ lt brnsh gy, occ f glau gr, tr lse foram, tr qtz, mod hd-hd, sbbly-sbfis

**SANDSTONE:** trnsp, trnsl, varicol qtz, f gr, v wl srt, sbang-rnd, sph-sb elong, poss arg mtrx, cl washed out, lse, comm glau pel, occ nod pyr, tr jasp, tr foss, p-fr inf por, no sh

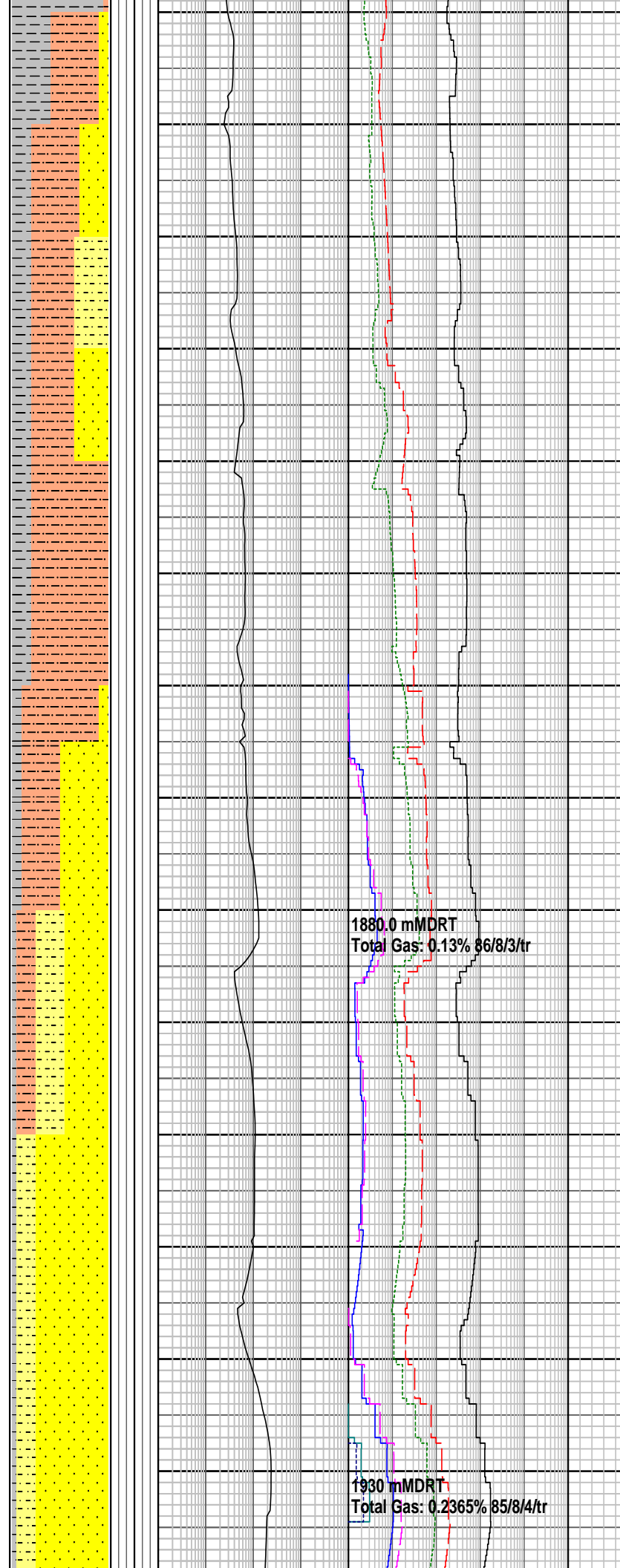
**CALCAREOUS SILTSTONE:** grd from Calc Clyst, olv gy-gnsh gy, lt brnsh gy, occ dissem f glau, sbbly-sbfiss

WOB: 10-20 klbf  
 RPM: 170-180  
 GPM: 810-820  
 SPP: 3000-3500 psi

Stand Pipe Pressure  
 sensor recalibrated

WOB: 10-20 klbf  
 RPM: 175-180  
 GPM: 810-820  
 SPP: 3000-3500 psi

800  
1810  
1820  
1830  
1840  
1850  
1860  
1870  
1880  
1890  
1900  
1910  
1920  
1930



MW: 1.16 sg    FV: 60  
 PV: 19        YP: 39  
 Gels: 15/19/21    pH: 9.1

**SILTY SANDSTONE:** trnsp. trnsl, or & yel qtz, f, tr m, v wl srt, sbang-rnd, sph- sb elong, slty olv gy mtrx-washed out, lse, abd glauc pel, tr nod pyr, tr foram, calc, pr inf por, n

**SILTSTONE:** olv gy-brnsh gy, com-abd diss f-m glauc, com-abd v f-f qtz, grd to Slty Sst i/p, arg, calc, sft-frm, amor-sbbiky.

**CLAYSTONE:** m lt gy-m gy, occ olv gy-gnsh gy, sft-hd, sbbiky-sbfiss, tr fiss.

**GLAUCONITIC SANDSTONE:** olv gy, trnsp, trnsl, op, yel or, vf-f gr, v wl srt, sbang-rnd, sph-sb elong, calc slty mtrx, pred lse, abd f-m glau pel, occ lith, tr pyr, p vis por, no shw

**SILTSTONE:** olv gy-brnsh gy, com-abd diss f-m glauc, com-abd v f-f qtz, grd to Slty Sst i/p, arg, calc, sft-frm, amor-sbbiky

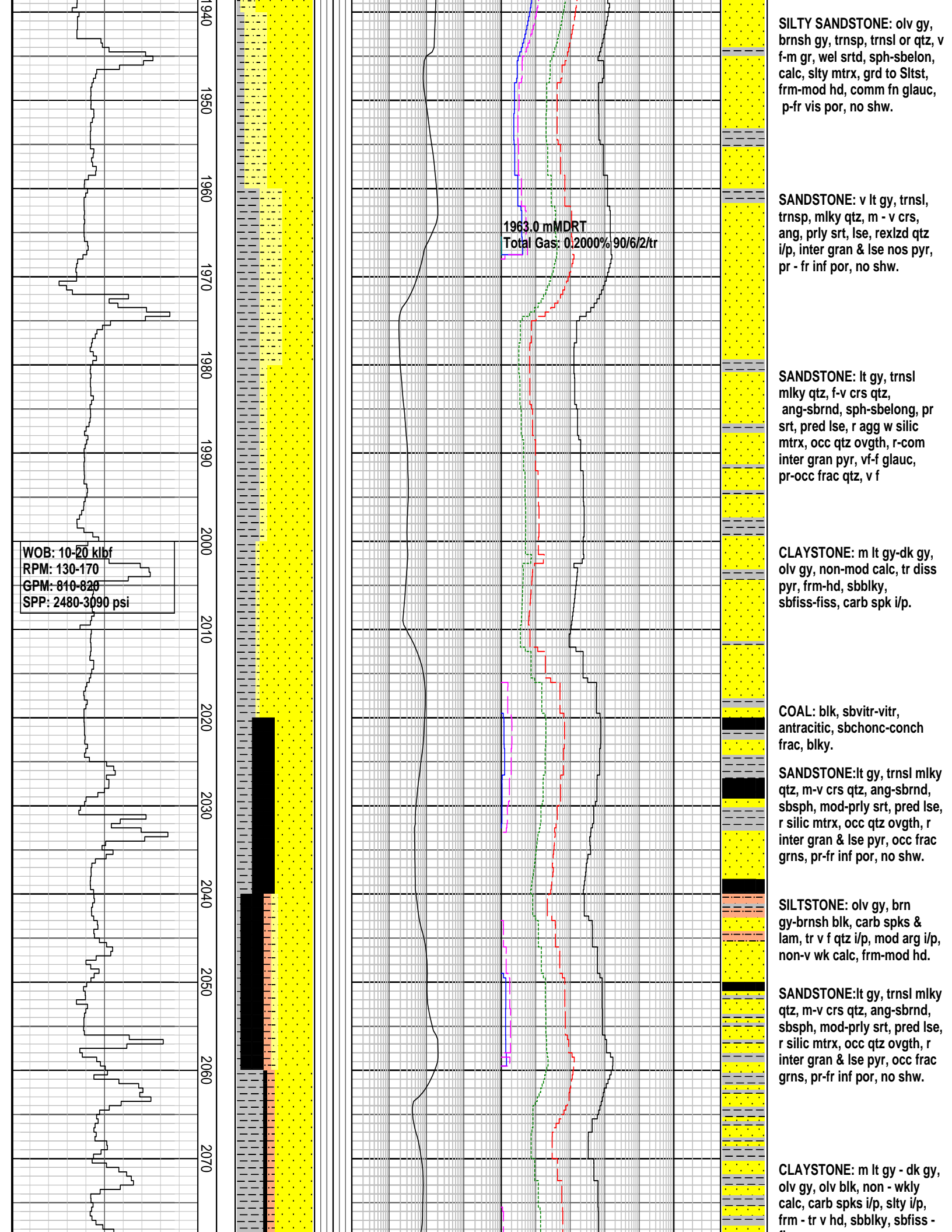
**SANDSTONE:** lt gy, trnsp, trnsl, varic qtz, f-crs, sbang-rnd, sph-sbelong, lse, vf-f glauc, r nod pyr, tr jasp, tr foss, p-fr inf por, no shw.

**CLAYSTONE:** m lt gy, mod calc-cald, tr slit, tr dis pyr, frm, sbbiky, sbfiss-fiss.

1880.0 mMDRT  
 Total Gas: 0.13% 86/8/3/tr

1930 mMDRT  
 Total Gas: 0.2365% 85/8/4/tr





WOB: 10-20 kbf  
 RPM: 130-170  
 GPM: 810-820  
 SPP: 2480-3090 psi

1963.0 mMDRT  
 Total Gas: 0.2000% 90/6/2/tr

**SILTY SANDSTONE:** olv gy, brnsh gy, trnsp, trnsl or qtz, v f-m gr, wel srted, sph-sbelon, calc, slty mtrx, grd to Slstst, frm-mod hd, comm fn glauc, p-fr vis por, no shw.

**SANDSTONE:** v lt gy, trnsl, trnsp, mlky qtz, m - v crs, ang, prly srt, lse, rexlzd qtz i/p, inter gran & lse nos pyr, pr - fr inf por, no shw.

**SANDSTONE:** lt gy, trnsl mlky qtz, f-v crs qtz, ang-sbrnd, sph-sbelong, pr srt, pred lse, r agg w silic mtrx, occ qtz ovgh, r-com inter gran pyr, vf-f glauc, pr-occ frac qtz, v f

**CLAYSTONE:** m lt gy-dk gy, olv gy, non-mod calc, tr diss pyr, frm-hd, sbblky, sbfiss-fiss, carb spk i/p.

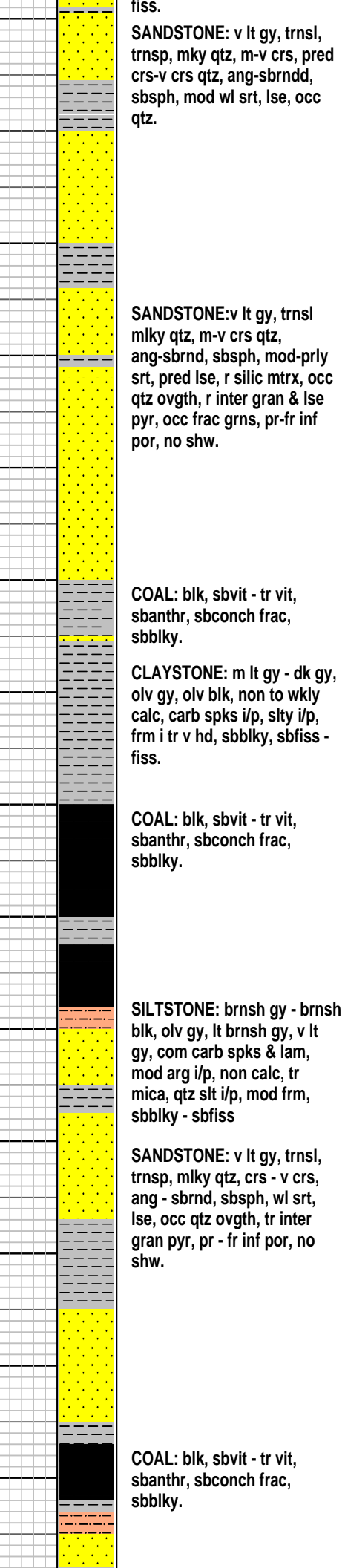
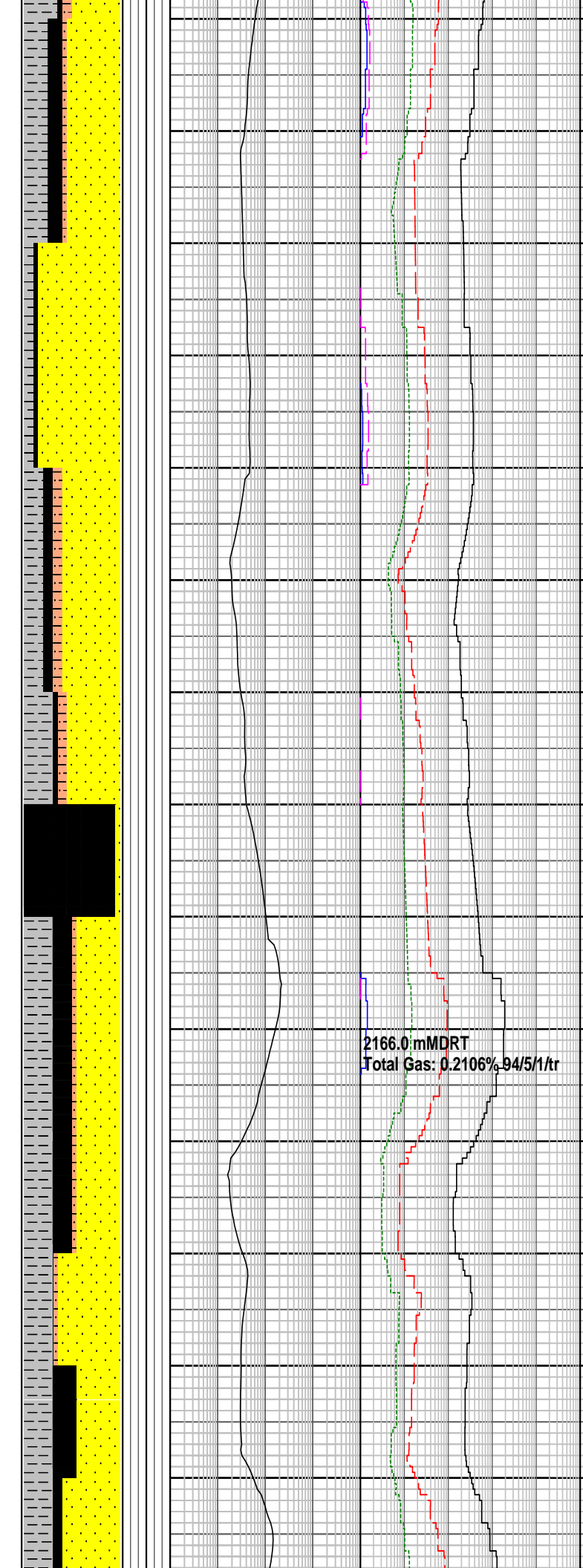
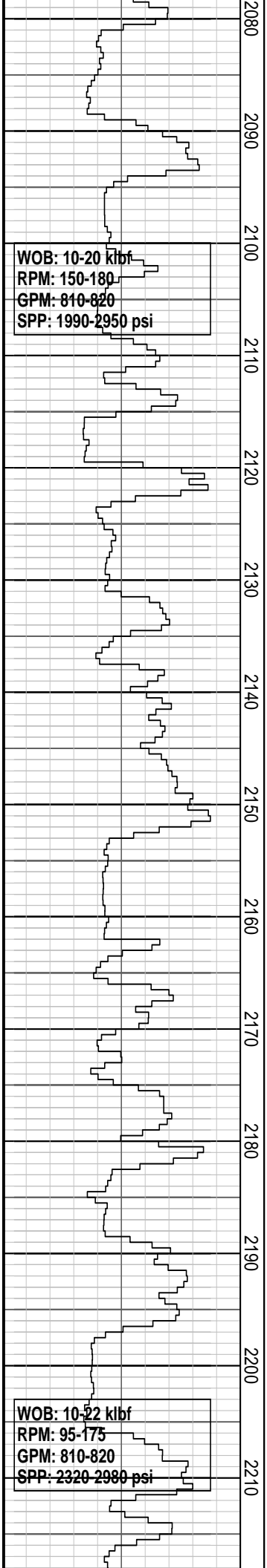
**COAL:** blk, sbvitr-vitr, antracitic, sbchonc-conch frac, blkly.

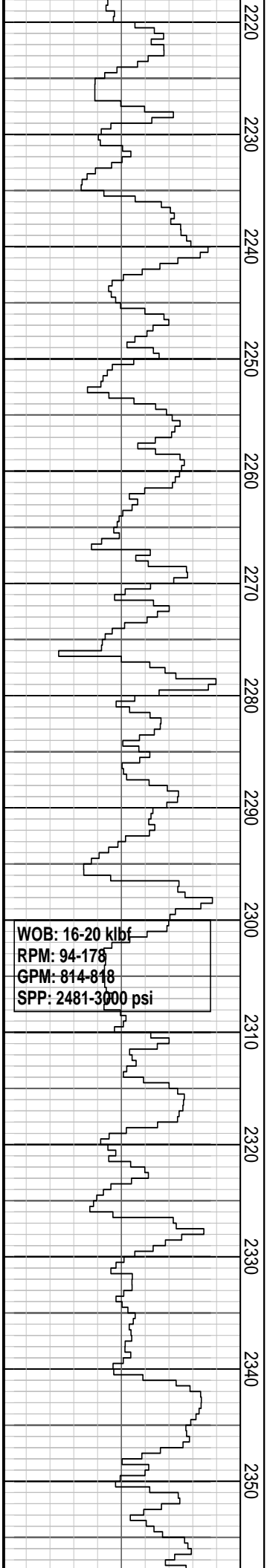
**SANDSTONE:**lt gy, trnsl mlky qtz, m-v crs qtz, ang-sbrnd, sbsph, mod-prly srt, pred lse, r silic mtrx, occ qtz ovgh, r inter gran & lse pyr, occ frac grns, pr-fr inf por, no shw.

**SILTSTONE:** olv gy, brn gy-brnsh blk, carb spks & lam, tr v f qtz i/p, mod arg i/p, non-v wk calc, frm-mod hd.

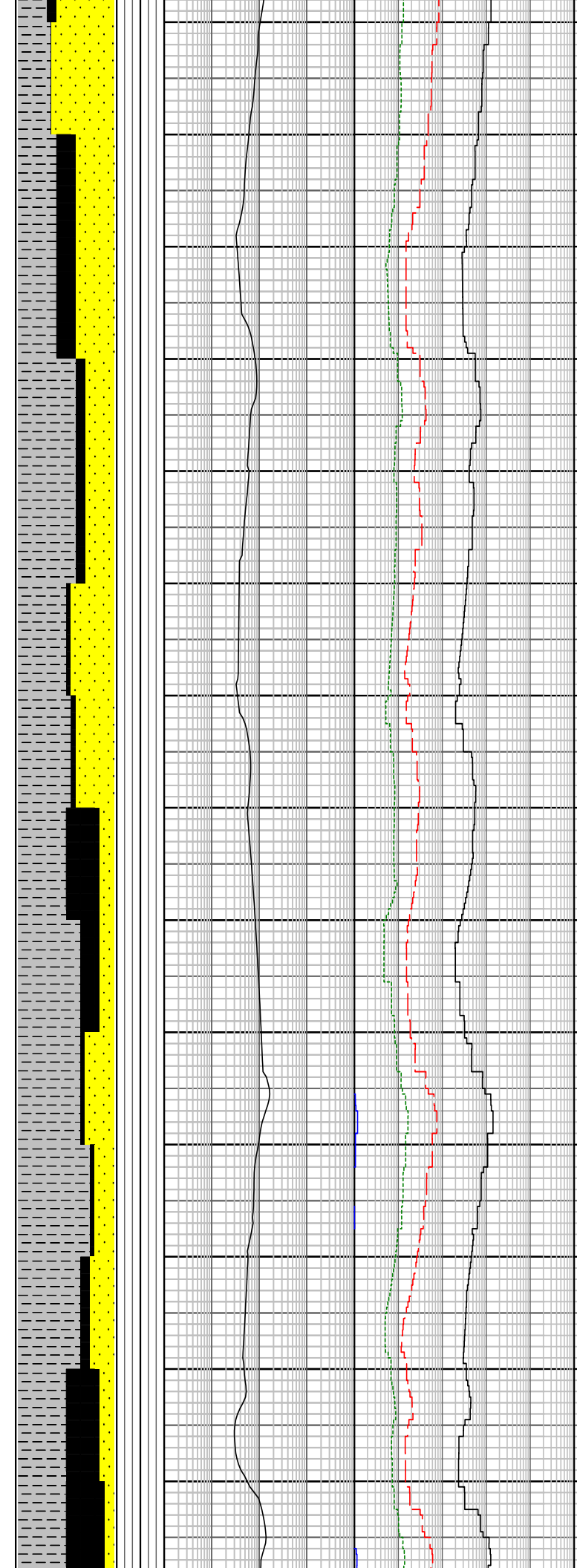
**SANDSTONE:**lt gy, trnsl mlky qtz, m-v crs qtz, ang-sbrnd, sbsph, mod-prly srt, pred lse, r silic mtrx, occ qtz ovgh, r inter gran & lse pyr, occ frac grns, pr-fr inf por, no shw.

**CLAYSTONE:** m lt gy - dk gy, olv gy, olv blk, non - wkly calc, carb spks i/p, slty i/p, frm - tr v hd, sbblky, sbfiss -

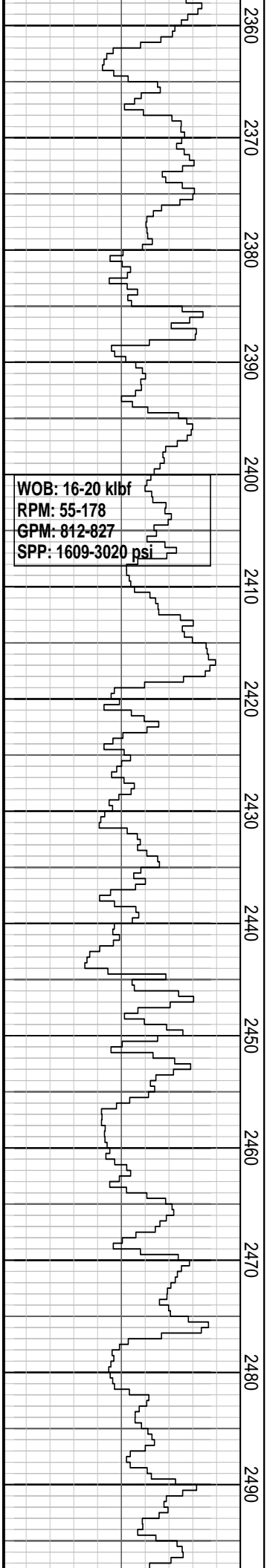




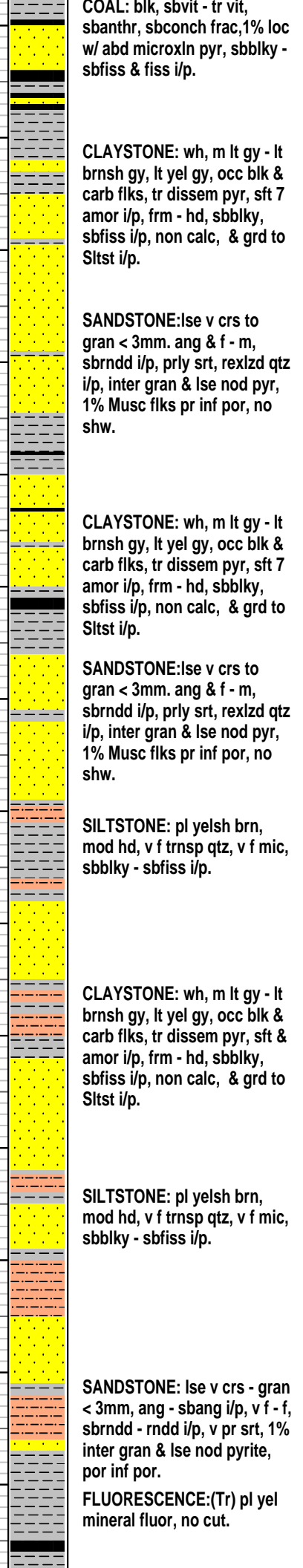
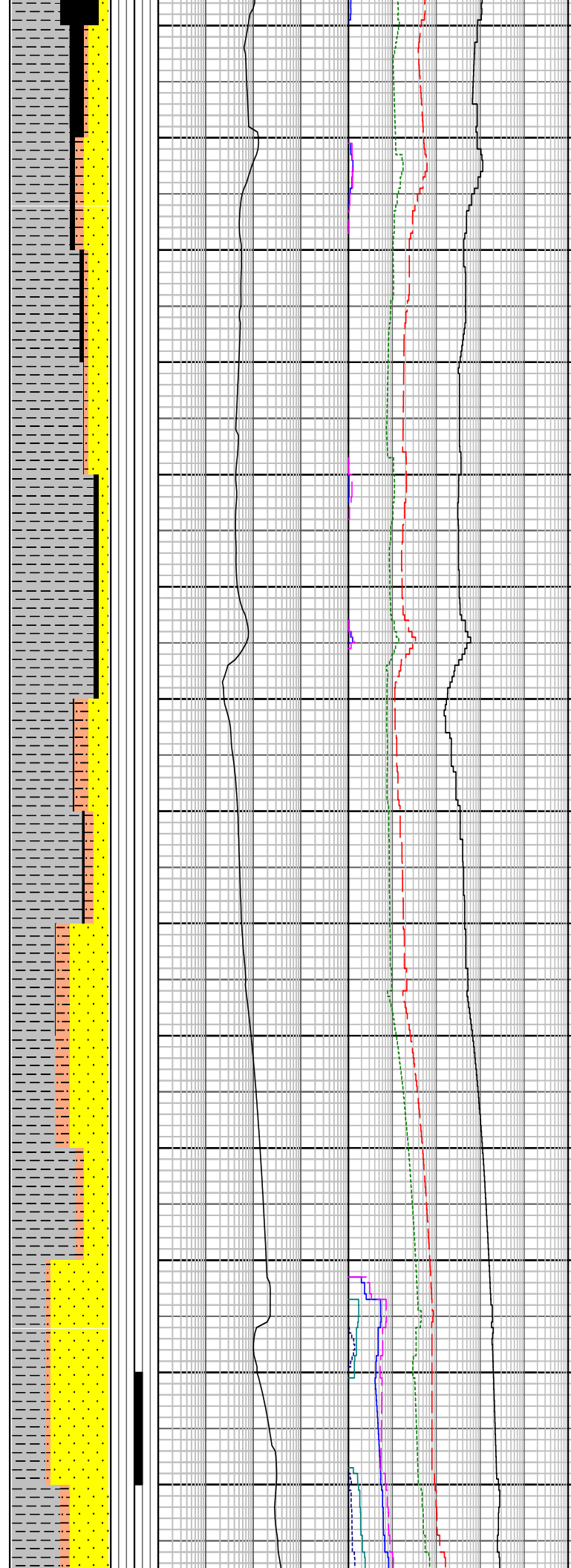
WOB: 16-20 klbf  
 RPM: 94-178  
 GPM: 814-818  
 SPP: 2481-3000 psi



- CLAYSTONE: lt gy - m gy, non - mod calc, tr - abd v f qtz i/p 20% grd to arg f grn Sst, com qtz slt, frm - sbbkly, sbfiss
- SANDSTONE: v lt gy, trnsl, trnsp, mlky qtz, crs - v crs, ang - sbrnd, sbsph, wl srt, lse, occ qtz ovgrth, tr inter gran pyr, pr - fr inf por, no shw.
- CLAYSTONE: wh, m lt gy - lt brnsh gy, lt yelsh gy, occ blk & carb flks, tr dissemin pyr, sft & amor i/p, frm - hd, sbbkly, sbfiss i/p, non calc & grd to Sltst i/p.
- SILTSTONE: brnsh gy - brnsh blk, olv gy, lt brnsh gy, v lt gy, com carb spks & lam, mod arg i/p, non calc, tr mica, qtz slt i/p, mod frm, sbbkly - sbfiss.
- SANDSTONE: v lt gy, trnsl, trnsp, mlky qtz, m - v crs, ang, prly srt, lse, rexlzd qtz i/p, inter gran & lse nos pyr, pr - fr inf por, no shw.
- SILTSTONE: brnsh gy - brnsh blk, olv gy, lt brnsh gy, v lt gy, com carb spks & lam, mod arg i/p, non calc, tr mica, qtz slt i/p, mod frm, sbbkly - sbfiss.
- COAL: blk, sbvit - tr vit, sbanthr, sbconch frac, sbbkly.
- SANDSTONE: v lt gy, trnsl, trnsp, mlky qtz, m - v crs, ang, prly srt, lse, rexlzd qtz i/p, inter gran & lse nod pyr, pr - fr inf por, no shw.
- SILTSTONE: brnsh gy - brnsh blk, olv gy, lt brnsh gy, v lt gy, com carb spks & lam, mod arg i/p, non calc, tr mica, qtz slt i/p, mod frm, sbbkly - sbfiss.
- CLAYSTONE: wh, m lt gy - lt brnsh gy, lt yelsh gy, occ blk & carb flks, tr dissemin pyr, sft & amor i/p, frm - hd, sbbkly, sbfiss i/p, non calc & grd to Sltst i/p.
- SANDSTONE: v lt gy, trnsl, trnsp, mlky qtz, m - v crs, ang, prly srt, lse, rexlzd qtz i/p, inter gran & lse nos pyr, pr - fr inf por, no shw.



WOB: 16-20 klbf  
RPM: 55-178  
GPM: 812-827  
SPP: 1609-3020 psi



COAL: blk, sbvit - tr vit, sbanthr, sbconch frac, 1% loc w/ abd microxln pyr, sbblky - sbfiss & fiss i/p.

CLAYSTONE: wh, m lt gy - lt brnsh gy, lt yel gy, occ blk & carb flks, tr dissem pyr, sft 7 amor i/p, frm - hd, sbblky, sbfiss i/p, non calc, & grd to Slst i/p.

SANDSTONE: lse v crs to gran < 3mm. ang & f - m, sbrndd i/p, prly srt, rexlzd qtz i/p, inter gran & lse nod pyr, 1% Musc flks pr inf por, no shw.

CLAYSTONE: wh, m lt gy - lt brnsh gy, lt yel gy, occ blk & carb flks, tr dissem pyr, sft 7 amor i/p, frm - hd, sbblky, sbfiss i/p, non calc, & grd to Slst i/p.

SANDSTONE: lse v crs to gran < 3mm. ang & f - m, sbrndd i/p, prly srt, rexlzd qtz i/p, inter gran & lse nod pyr, 1% Musc flks pr inf por, no shw.

SILTSTONE: pl yelsh brn, mod hd, v f trnsp qtz, v f mic, sbblky - sbfiss i/p.

CLAYSTONE: wh, m lt gy - lt brnsh gy, lt yel gy, occ blk & carb flks, tr dissem pyr, sft & amor i/p, frm - hd, sbblky, sbfiss i/p, non calc, & grd to Slst i/p.

SILTSTONE: pl yelsh brn, mod hd, v f trnsp qtz, v f mic, sbblky - sbfiss i/p.

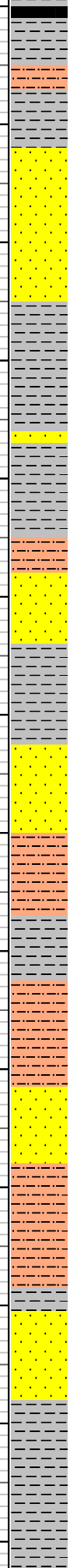
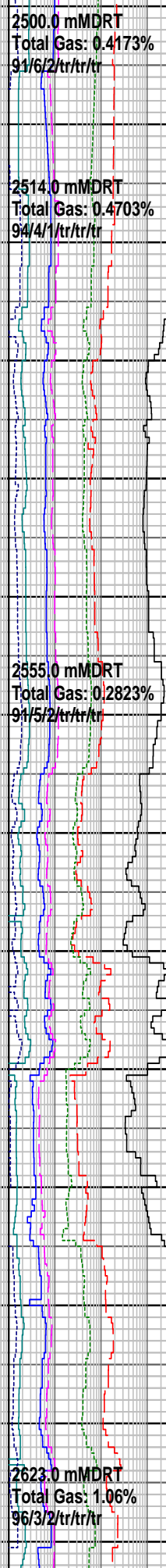
SANDSTONE: lse v crs - gran < 3mm, ang - sbang i/p, v f - f, sbrndd - rndd i/p, v pr srt, 1% inter gran & lse nod pyrite, por inf por.

FLUORESCENCE: (Tr) pl yel mineral fluor, no cut.

WOB: 16-20 klbf  
 RPM: 176-180  
 GPM: 814-820  
 SPP: 2536-3135 psi

WOB: 18-20 klbf  
 RPM: 95-180  
 GPM: 602-818  
 SPP: 2237-3141 psi

2500  
2510  
2520  
2530  
2540  
2550  
2560  
2570  
2580  
2590  
2600  
2610  
2620  
2630



COAL: blk, sbvit - tr vit, sbanthr, sbconch frac, 1% loc w/ abd microxln pyr, sbblky - sbfiss & fiss i/p.

SANDSTONE: lse v crs - gran < 3mm, ang - sbang i/p, v f - f, sbrndd - rndd i/p, v pr srt, 1% inter gran & lse nod pyrite, por inf por.  
 FLUORESCENCE:(Tr) pl yel mineral fluor, no cut.

SANDSTONE: lse v crs - gran < 3mm, ang - sbang i/p, v f - f, sbrndd - rndd i/p, v pr srt, 1% inter gran & lse nod pyrite, por inf por.  
 FLUORESCENCE:(Tr) pl yel mineral fluor, no cut.

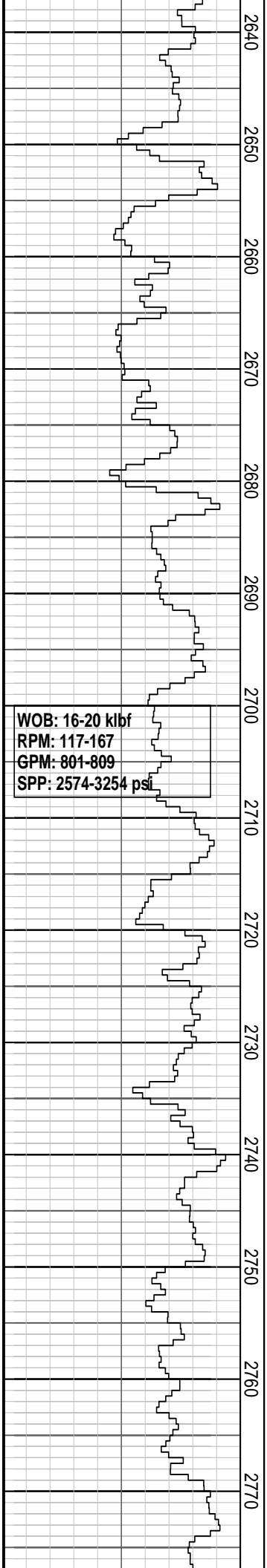
SILTSTONE: pl yelsh brn, mod hd, v f trnsp qtz, v f mic, sbblky - sbfiss i/p.

SANDSTONE: lse sd, trnsp - trnsl, v f - m & v crs i/p, sbrndd - rndd, ang i/p, mod - prly srt, 1% lse Musc flks, pr to fr inf por.

CLAYSTONE: m lt gy-m gy, dk gy i/p, yel gy - wh i/p, occ blk & carb flk thru, tr diss pyr, sft & amorp - frm, non calc, loc w v f sd, grd to Slstst i/p

SILTSTONE: pl yel brn, m gy - brnsh gy, frm - hd, com blk carb flk - thn strk, 1% m biot flk, 1% v f sd, sbblky - sbfiss i/p, grd to v f Sstst i/p

CLAYSTONE: wh, m ly gy - m gy, dk gy i/p, yel gy i/p, occ blk & carb flk thru, tr dis pyr, sft & amor - frm, non calc, loc w v f sd, grd to Slstst i/p



2640  
2650  
2660  
2670  
2680  
2690  
2700  
2710  
2720  
2730  
2740  
2750  
2760  
2770

WOB: 16-20 klbf  
RPM: 117-167  
GPM: 801-809  
SPP: 2574-3254 psi

2651.0 mMDRT  
Total Gas: 2.55%  
96/3/rt/rt/rt/rt

COAL: blk, sb vit, sb anthr, sb conch frac, 1% loc w abd microIn ply, sbbiky - sbfiss

CLAYSTONE: wh, m lt gy - m gy, dk gy i/p, yel gy i/p, occ blk & carc flk thru, tr dis pyr, sft & amor - fm, non calc, loc w v f sd, grd to Slst i/p

SANDSTONE: lse sd, trnsp - trnsl, v f - m, v crs i/p, sbrndd-rndd, ang i/p, mod - p srt, 1% lse musc flk, 1% lse v crs - granar

SILTSTONE: dk yelsh brn - brnsh gy, m gy i/p, frm - hd, comm blk flk - thn strk, 1% m biot flk, 1% v f sd, sbbiky - sbfiss i/p, grd to v f Sst i/p, occ wh - gy Sh, hd, brit

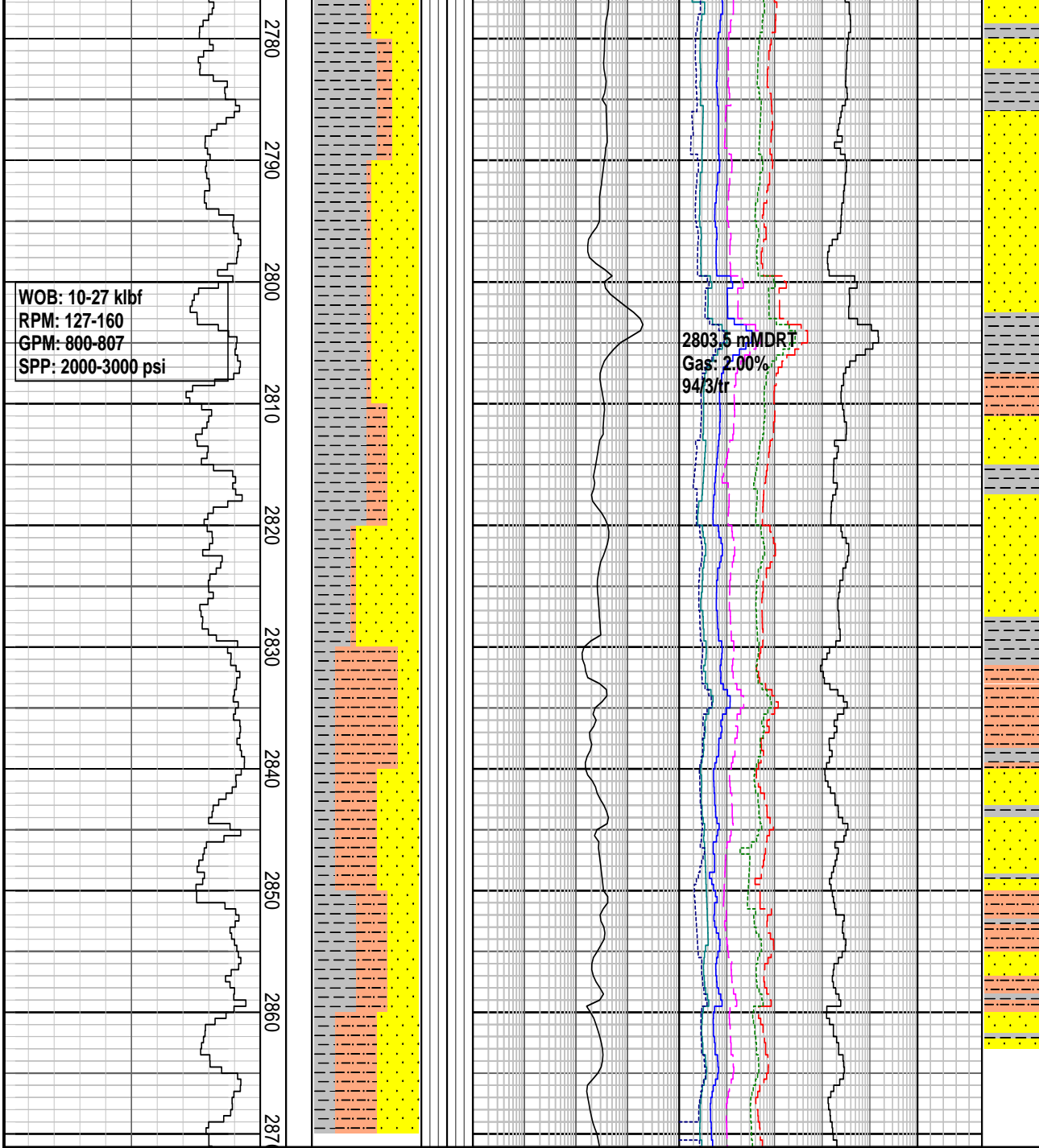
SANDSTONE: lse sd, trnsp - trnsl, v f-m, v crs i/p, sbrndd-rndd, ang i/p, mod-p srt, 1% lse musc flk, 1% lse v crs-granar, Sst agg, wh-pl yelsh or, fri, f-m, sbang, mod w v f blk carb flk, arg mtrx, inf sil cmt i/p, infilled pyr cmt i/p, nil-fr por

CLAYSTONE: wh, m lt gy - m gy, dk gy i/p, yel gy i/p, occ blk & carc flk thru, tr dis pyr, sft & amor - fm, non calc, loc w v f sd, grd to Slst i/p

SANDSTONE: olv gy com, v lt gy-yel gy agg, trnsp, trnsl, v f-m gr qtz, wl rndd-sbang, mod wl srt, fri agg, pred lse, olv gy slty mtx, wh/yelsh gy arg mtrx i/p, wk sil cmt, occ

carb mat, 5% v crs rexldz qtz, pr vis por, no fluor

SANDSTONE: olv gy com, v lt gy-yelsh gy agg, trnsp, trnsl, v f-m gr qtz, wl rndd-sbang, mod wl srt, fri agg, com lse, olv gy slty mtx, grd to slty Sst, wh/yelsh gy arg mtrx i/p, wk sil cmt, carb mat i/p, tr v crs rexldz qtz, pr - gd vis por, tr



fluor

CLAYSTONE: m dk gy - gysh blk, brnsh blk, gen more carb, com dissem pyr, slty i/p

SILTSTONE: olv gy, m dk gy, carb i/p, coaly lam i/p, com vf rnd qtz, hd, fri i/p, sbfis

SANDSTONE: olv gy com, v lt gy-yelsh gy agg, trnsp, trnsl, v f-m gr qtz, wl rndd-sbang, mod wl srt, fri agg, com lse, olv gy slty mtx, grd to slty Sst, wh/yelsh gy arg mtrx i/p pyr cmt, carb mat i/p, tr v crs rexldz qtz, pr - gd vis por, tr dll-mod bri nat fluor

SILTSTONE: olv gy, m dk gy, carb i/p, coaly lam i/p, com vf rnd qtz, hd, fri i/p, sbfis

CLAYSTONE: m dk gy - gysh blk, brnsh blk, gen more carb, com dissem pyr, slty i/p

### FORMATION EVALUATION LOG

Drilling Rate		TVDRT meters	Cuttings Lithology	Oil Show	Visual Inferred Porosity	Gas Data		Chromatograph Data		Calcmetry	Interpreted Lithology	Lithology Description
ROP (m/hr)	MD meters 1:500					Gas Hydrocarbon Avg %	Methane ppm					
20	220					0.01	1	100000	1			
40	240					0.1	10	100000	1	Ethane ppm		
60	260					1		100000	1	Propane ppm		
80	280							100000	1	iso-Butane ppm		
100	300							100000	1	n-Butane ppm		
120	320							100000	1	iso-Pentane ppm		
140	340							100000	1	n-Pentane ppm		
160	360							100000	1			
180	380							100000	1			
200	400							100000	1			